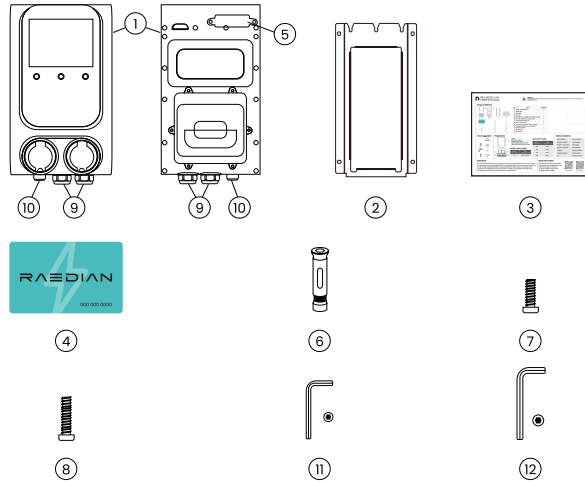




SAFETY

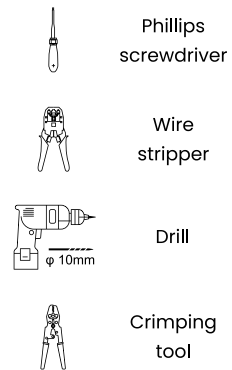
The installation must comply with relevant standards and (local) regulations and must only be carried out by a qualified technician.

Scope of delivery

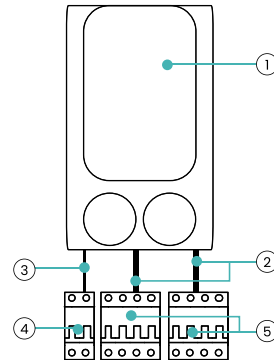


No.	Item	Quantity
1	GEMINI charging station	1
2	Wall bracket	1
3	Quick guide	1
4	RFID card	2
5	Pre-paid SIM card (500M data, already installed)	1
6	M8-10*80 stainless steel expansion bolt	4
7	M8*18 stainless steel screw	2
8	M8*25 machine screw	3
9	Plug for M40 cable gland (Already installed)	2
10	T-Rubber for M25 dual-port cable gland (Already installed)	2
11	Allen key (S3)	1
12	Allen key (S5)	1

Tools suggestion



Preparation



1. GEMINI
2. Main power supply
3. Auxiliary power supply
4. Type A RCBO, 2P, 6kA, 30mA, C10
5. Type A RCBO, 4P, 6kA, 30mA, Curve C

Auxiliary power supply

Maximum input current	Cable cross section area
1A	1.5mm ² ~ 2.5mm ²

Main power supply

Maximum input current	Cable cross section area
16A	4mm ²
32A	6mm ²
40A	10mm ²
64A	16mm ²

Status indication

	Mobius strip cycle	Boot initialization
	Cyan breathing	Standby-connected
	Green steady	Plugged in-unauthorized
	Green breathing	Plugged in-authorized
	Gradient breathing	Charging
	Gradient steady	Charging completed
	Red steady (4 LEDs)	Error

Disclaimer

The information in this document is for information purpose only, is provided as is, and may be subject to change without notice. Although RAEDIAN has made its best efforts to keep the document as precise and up-to-date as possible, RAEDIAN including its subsidiaries doesn't assume any liability for the correctness or completeness of the document and is not liable or responsible for the defects and damages resulting from the use of the information contained herein.

More information

This document contains only simplified quick guide, under the right links you can obtain the most up-to-date and complete installation manual and installation video for GEMINI.



Installation Manual

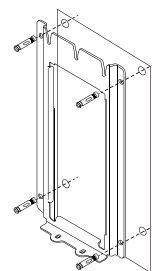


Installation Video

Installing

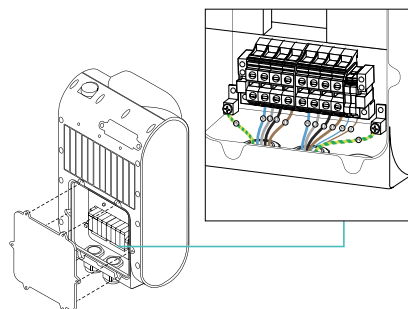
1. Mount the wall bracket

- The installation position should be a solid, right-angled wall.
- The recommended installation height is 900 - 1200 mm from the ground to the bottom of the wall-bracket.
- Drill the holes for the wall bracket. Use the wall bracket for marking the holes. Level the mounting block with a spirit level.
- Fix the wall bracket to the wall by pushing the M8-10*80 stainless steel expansion bolts into the four holes.



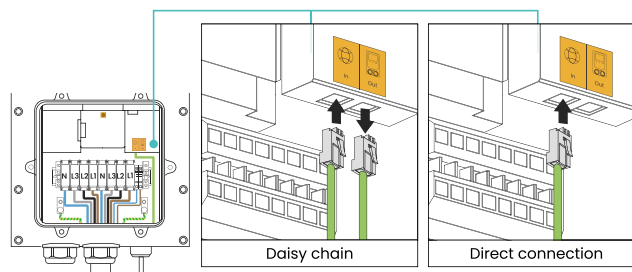
2. Electrical installation

- Loosen the screws on the charging station's rear wiring cover plate, remove it, and set it aside carefully.
- Remove the plugs from the two M40 cable glands, thread the main power supply cables for socket A and auxiliary power supply cables via the M40 cable gland on the right (back view).
- Thread the main power supply cables for socket B via the M40 cable gland on the left (back view).
- Connect the power supply cables to the terminal blocks and connect PE to the PE ground terminal.
- Tighten the two M40 cable glands.



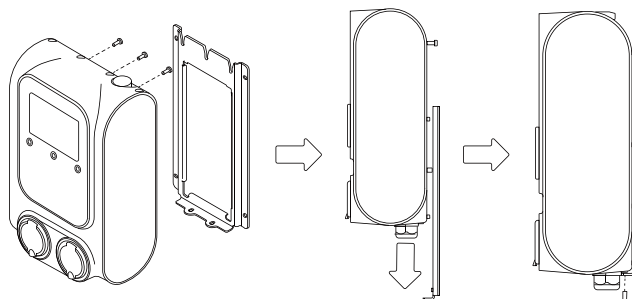
3. Ethernet cable installation

- Remove the T-Rubber(s), connect the ethernet cable(s) via the M25 cable gland on the bottom to the RJ45 port(s) of the charging station.
- Tighten the M25 cable gland.
- Check and confirm that the installation is correct, then reinstall the rear wiring cover plate.



4. Mount and secure the charging station

- Tighten the three M8*25 machine screws into the threaded holes at the top rear of the charging station.
- Hang the charging station to the wall bracket via the three machine screws.
- Tighten the two M8*18 stainless steel screws at the bottom to complete the installation.



Commissioning

Power on

- Turn on the local power supply. Wait until you see the hello page.
- Scan the QR code to download the Install APP.
- Press any button (A', 'B' or 'O') to skip the hello page and you will see the standby page (Without pressing, it will automatically go to the standby page after 600s countdown).

Testing the sockets

- Insert the charging cable into the socket-outlet of the charging station and the vehicle inlet.
- Press the corresponding button (A' or 'B') for the inserted socket outlet.
- Hold the RFID card in front of the card reader to initiate charging.
- Hold the RFID card in front of the card reader to stop the charging process.
- Remove the charging cable.
- Repeat the same procedure for the other socket.

Install SIM card

- The charging station comes with a pre-paid SIM card (500M data).
- Loosen the screws on the charging station's rear router cover plate to install your own SIM card and reinstall the rear router cover plate.

